

Jasper 42.

— 4 + 4 BED — 2.5 + 2.5 BATH — 1 + 1 CAR
— 416.4m²



The Jasper Duplex provides generous space, comfortably accommodating two families.

The Jasper Duplex offers open-plan living with a kitchen overlooking the alfresco, ideal for gatherings. Use the second residence for family or as a rental investment.

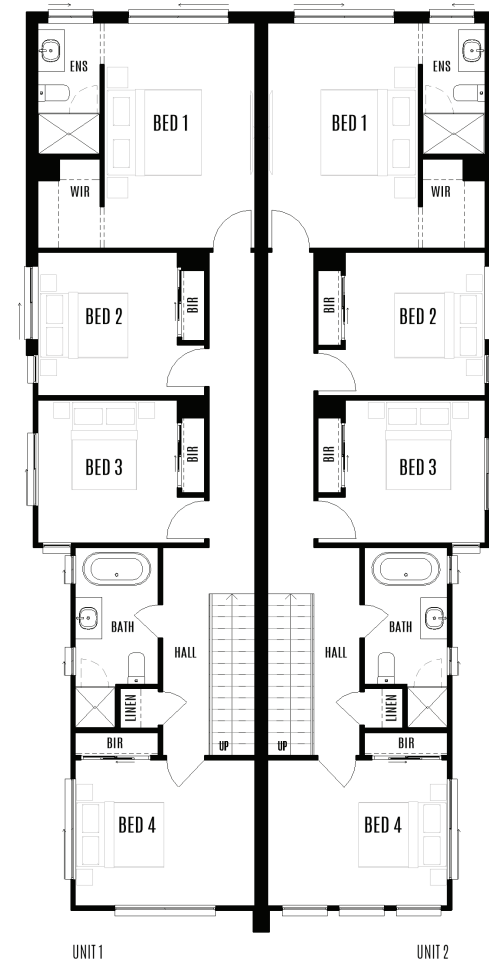


Total area	416.4m²
House length	22.42m
House width	11.35m
Block width	14m
Living	4.70 x 3.30
Dining	4.70 x 3.00
Kitchen	3.41 x 2.45
Alfresco	4.98 x 3.00
Garage	3.02 x 5.52
Master bedroom	3.26 x 4.87
Bedroom 2	3.02 x 3.10
Bedroom 3	3.02 x 3.10
Bedroom 4	3.89 x 3.16

UPGRADED ITEMS

All upgraded items are indicated in **gold**, featuring enhancements such as:

- Full joinery fit-out in butler's pantry, alfresco, and laundry



P (02) 5062 5767

W worthingtonhomes.com.au

E info@worthingtonhomes.com.au

Images in this brochure may depict landscaping, fencing, upgraded fixtures, features or finishes which are not included and are an artist's impression only. Facades can affect the size of the dwelling and as such the final dwelling size is subject to change based on selected facade. Pricing is subject to final floor plans, tender and colour selections. This brochure is to be printed in colour only and black & white copies are considered uncontrolled. This design is copyright and cannot be reproduced or copied in any form or by any means. Please discuss with your sales consultant for clarification and availability on all items shown herein. Worthington Constructions Pty Ltd all rights reserved.