

# Hunter 35.

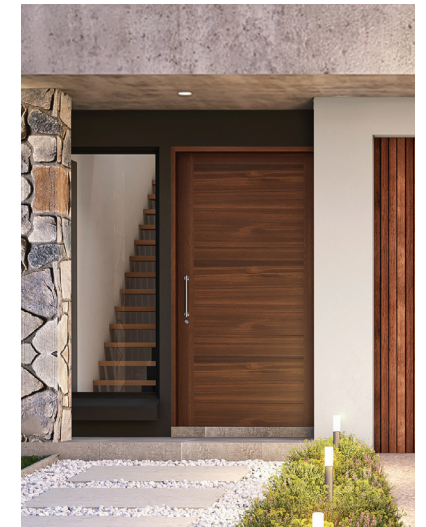
— 5 BED — 3 BATH — 2 CAR

— 322.3m<sup>2</sup>



**The Hunter 35 is a thoughtfully designed double-storey home, ideal for multi-generational living with spacious, flexible areas that provide both connection and independence.**

Ideal for work, play, entertaining, and relaxation, with five bedrooms, three bathrooms, and multiple living areas, this home offers ample space for the whole family to enjoy.



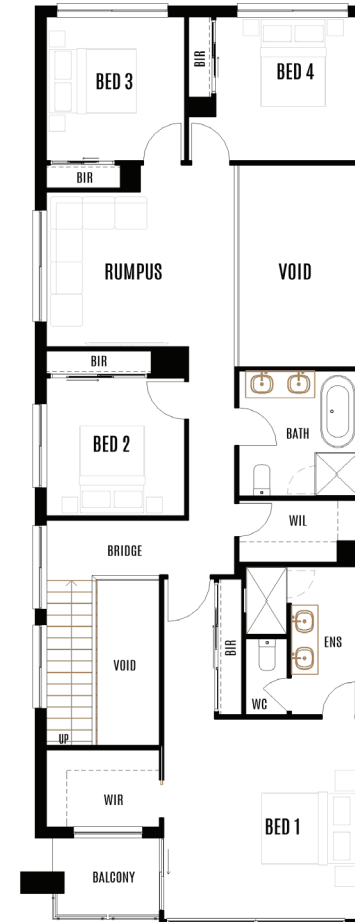
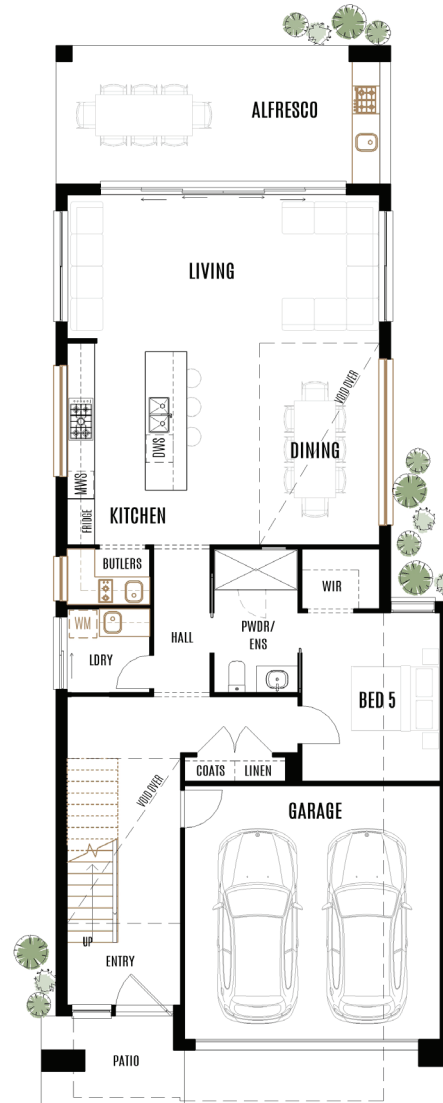
<b>Total area</b>	<b>322.3m<sup>2</sup></b>
House length	23.22m
House width	8.58m
Block width	10m
Living	6.78 x 3.22
Dining	4.18 x 4.00
Kitchen	2.60 x 4.38
Bedroom 5	3.00 x 3.66
Alfresco	7.02 x 3.20
Garage	5.55 x 5.52

Master bedroom	4.23 x 4.35
Bedroom 2	3.00 x 3.00
Bedroom 3	3.00 x 3.13
Bedroom 4	3.10 x 3.13
Rumpus	4.14 x 3.35

#### UPGRADED ITEMS

All upgraded items are indicated in **gold**, featuring enhancements such as:

- Complete joinery fit-out to butler's, laundry and alfresco
- Double-height window spanning void to dining



P (02) 5062 5767

W [worthingtonhomes.com.au](http://worthingtonhomes.com.au)

E [info@worthingtonhomes.com.au](mailto:info@worthingtonhomes.com.au)

Images in this brochure may depict landscaping, fencing, upgraded fixtures, features or finishes which are not included and are an artist's impression only. Facades can affect the size of the dwelling and as such the final dwelling size is subject to change based on selected facade. Pricing is subject to final floor plans, tender and colour selections. This brochure is to be printed in colour only and black & white copies are considered uncontrolled. This design is copyright and cannot be reproduced or copied in any form or by any means. Please discuss with your sales consultant for clarification and availability on all items shown herein. Worthington Constructions Pty Ltd all rights reserved.