

Eden On Display.

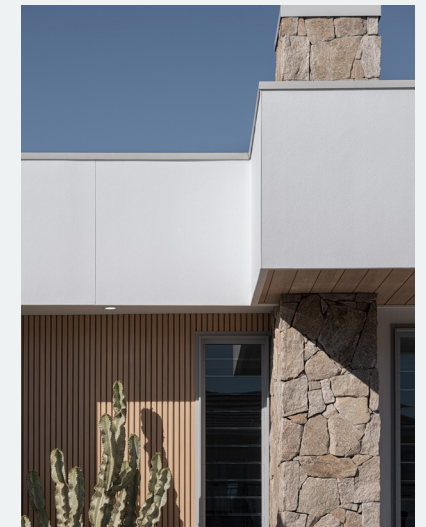
— 3 BED — 2 BATH — 1 CAR

— 168m²



The Eden 18 is perfect for young families, couples, and downsizers. Its open-plan living and centerpiece kitchen bring style and functionality to modern living.

Featuring a wraparound kitchen centred in the main living area and overlooking the back yard, providing a pleasant cooking experience. The Eden offers several options to add more spaces to suit your family's needs.



Total area	168m²
House length	16.74m
House width	11.66m
Block width	13.50m

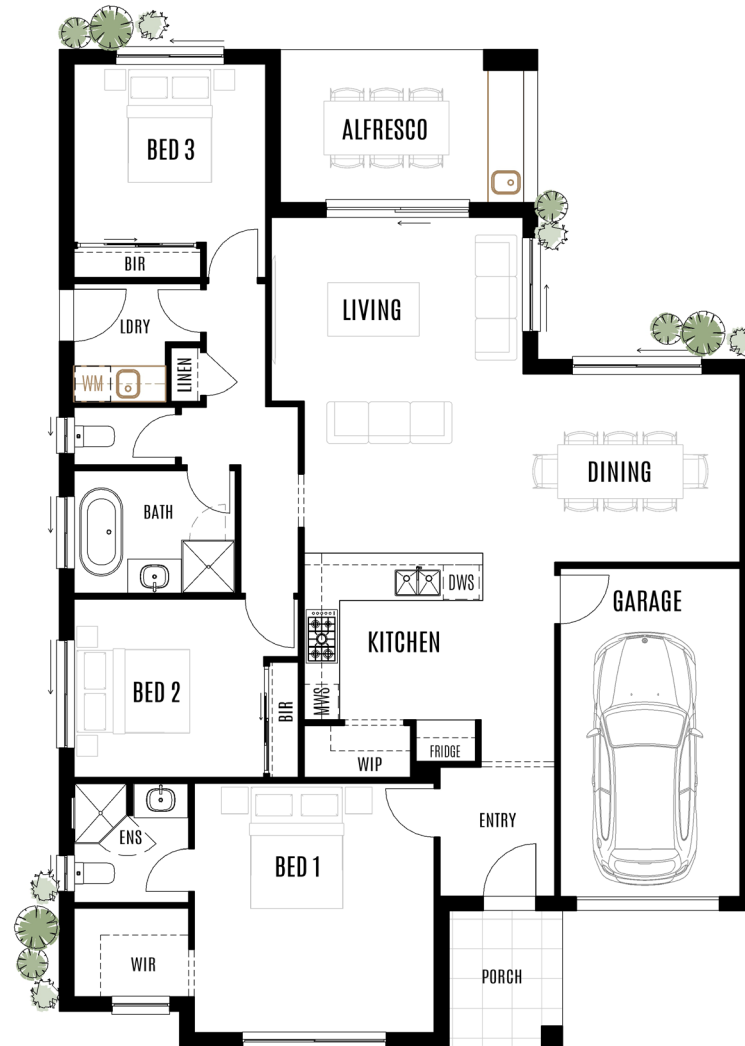
Living	4.23 x 5.64
Dining	3.64 x 3.17
Kitchen	3.00 x 2.80
Alfresco	4.32 x 2.57
Garage	3.02 x 5.52

Master bedroom	4.03 x 4.19
Bedroom 2	3.19 x 3.00
Bedroom 3	3.22 x 3.00

UPGRADED ITEMS

All upgraded items are indicated in **gold**, featuring enhancements such as:

- Complete joinery fit-out to laundry and alfresco



P (02) 5062 5767

W worthingtonhomes.com.au

E info@worthingtonhomes.com.au

Images in this brochure may depict landscaping, fencing, upgraded fixtures, features or finishes which are not included and are an artist's impression only. Facades can affect the size of the dwelling and as such the final dwelling size is subject to change based on selected facade. Pricing is subject to final floor plans, tender and colour selections. This brochure is to be printed in colour only and black & white copies are considered uncontrolled. This design is copyright and cannot be reproduced or copied in any form or by any means. Please discuss with your sales consultant for clarification and availability on all items shown herein. Worthington Constructions Pty Ltd all rights reserved.