




Classic façade

Jasper Duplex

 4+4  2.5+2.5  1+1

The Jasper Duplex offers an abundance of space, accommodating two families.

Enjoy a modern open plan design that offers plenty of space for families of all sizes. With a kitchen overlooking the outdoor alfresco and adjoining dining/living area, Jasper is perfect for entertaining guests. Accommodate extended family in the adjacent residence or rent out both homes as an investment property.

- Walk-in robe and private ensuite to the master bedroom
- Modern kitchen with a walk-in pantry
- Large outdoor alfresco for entertaining



View our Value Plus, Lifestyle and Premium inclusions online

DESIGN OPTIONS

- Optional double garage

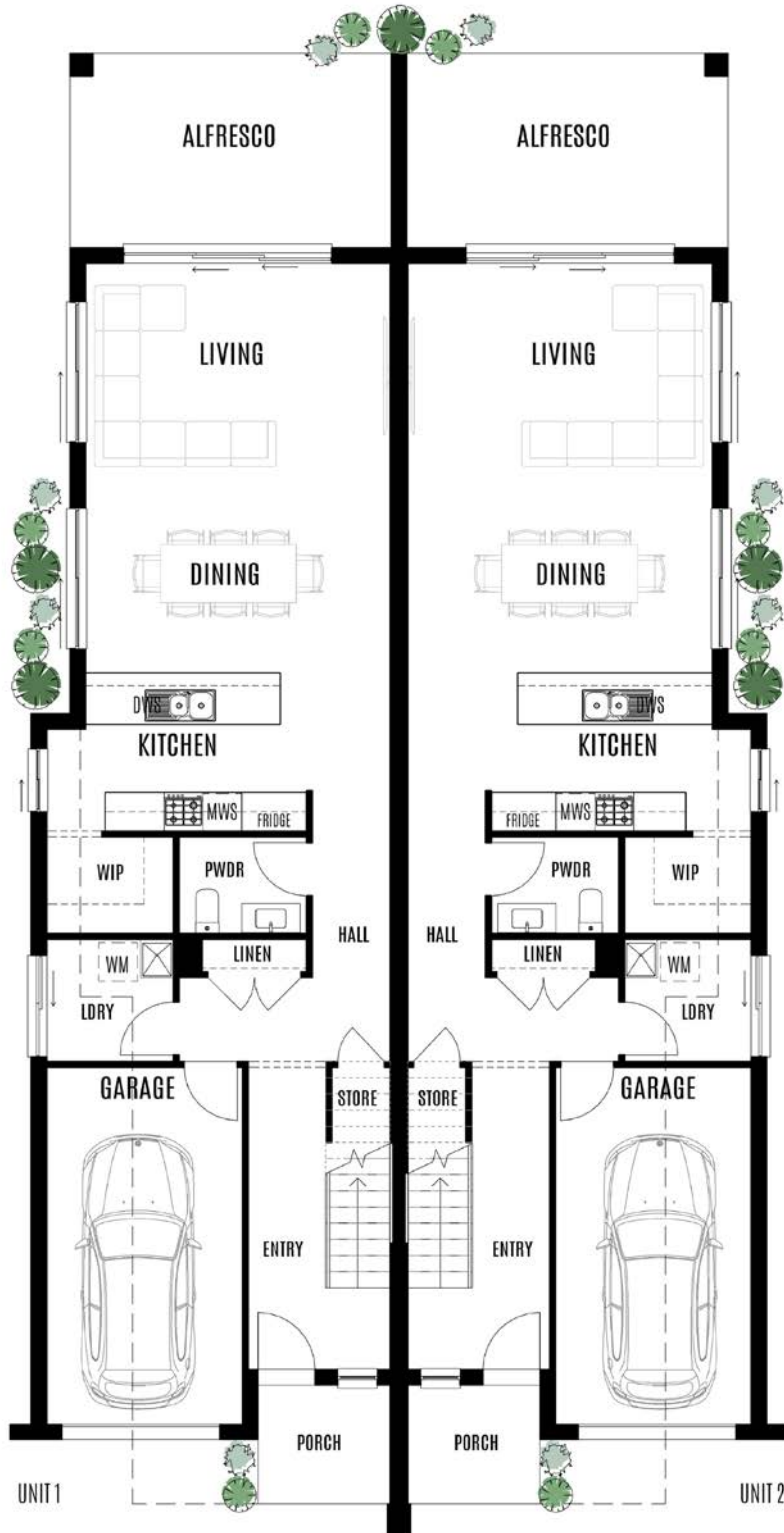


WORTHINGTON HOMES

 Call 1300 30 11 38

 worthingtonhomes.com.au

JASPER DUPLEX



GROUND FLOOR

HOUSE SIZE

Total area	416.4m ²
House length	22.42m
House width	11.35m
Block width	14m

ROOM SIZE

Living	4.70 x 3.30	Master bedroom	3.26 x 4.87
Dining	4.70 x 3.00	Bedroom 2	3.02 x 3.10
Kitchen	3.41 x 2.45	Bedroom 3	3.02 x 3.10
Alfresco	4.98 x 3.00	Bedroom 4	3.89 x 3.16
Garage	3.02 x 5.52		

JASPER DUPLEX



FIRST FLOOR

HOUSE SIZE

Total area	416.4m ²
House length	22.42m
House width	11.35m
Block width	14m

ROOM SIZE

Living	4.70 x 3.30	Master bedroom	3.26 x 4.87
Dining	4.70 x 3.00	Bedroom 2	3.02 x 3.10
Kitchen	3.41 x 2.45	Bedroom 3	3.02 x 3.10
Alfresco	4.98 x 3.00	Bedroom 4	3.89 x 3.16
Garage	3.02 x 5.52		

Why build with Worthington?

Here are 10 reasons why Worthington Homes is a better choice.

1 You're not just a number

You get your own dedicated Site Manager and will receive regular project updates.

3 No ghosting, guaranteed

Call the office and we will respond to your enquiry as promptly as possible.

5 Talk to real people

Only real people answer our phones, not automated robots or machines.

7 Standard site costs included

Your tender includes allowance for site works, council DA/CDC, service connectivity and BASIX.

9 No compromising on quality

Your home is built to a high standard of workmanship - exactly as it should be.

2 Enjoy a personalised service

We're all here to help and guide you throughout the journey to building your new home.

4 High-quality inclusion options

Choose from a wide selection of inclusions for a variety of budgets and tastes.

6 Minimal building disruption

We're proactive in solving any challenges along the way to minimise any delays.

8 What you see is what you get

We offer value-for-money and will always be upfront on costs so there are no surprises.

10 We'll build great memories too

Every home owner receives a personalised memory book as a keepsake of your journey.

// We aim to make the journey of building your new home both **simple** and **stress-free**



WORTHINGTON HOMES

📞 Call 1300 30 11 38

🔍 worthingtonhomes.com.au