



Salt façade

Eden 22



4



2



2

The Eden 22 is a uniquely designed home, perfectly sized for young families, couples and those looking to downsize. Ticking all the boxes with its open plan living and centre piece kitchen.

Now with an additional bedroom and a double garage included, the Eden 22 covers all your needs without compromising on space.

- An outdoor alfresco area perfect for entertaining family and friends
- Generously sized master bedroom with its own walk-in robe and ensuite
- Well suited for first homeowners



View our Value Plus, Lifestyle and Premium inclusions online

DESIGN OPTIONS

- Butler's pantry option
- Larger alfresco in lieu of bed 4/ study

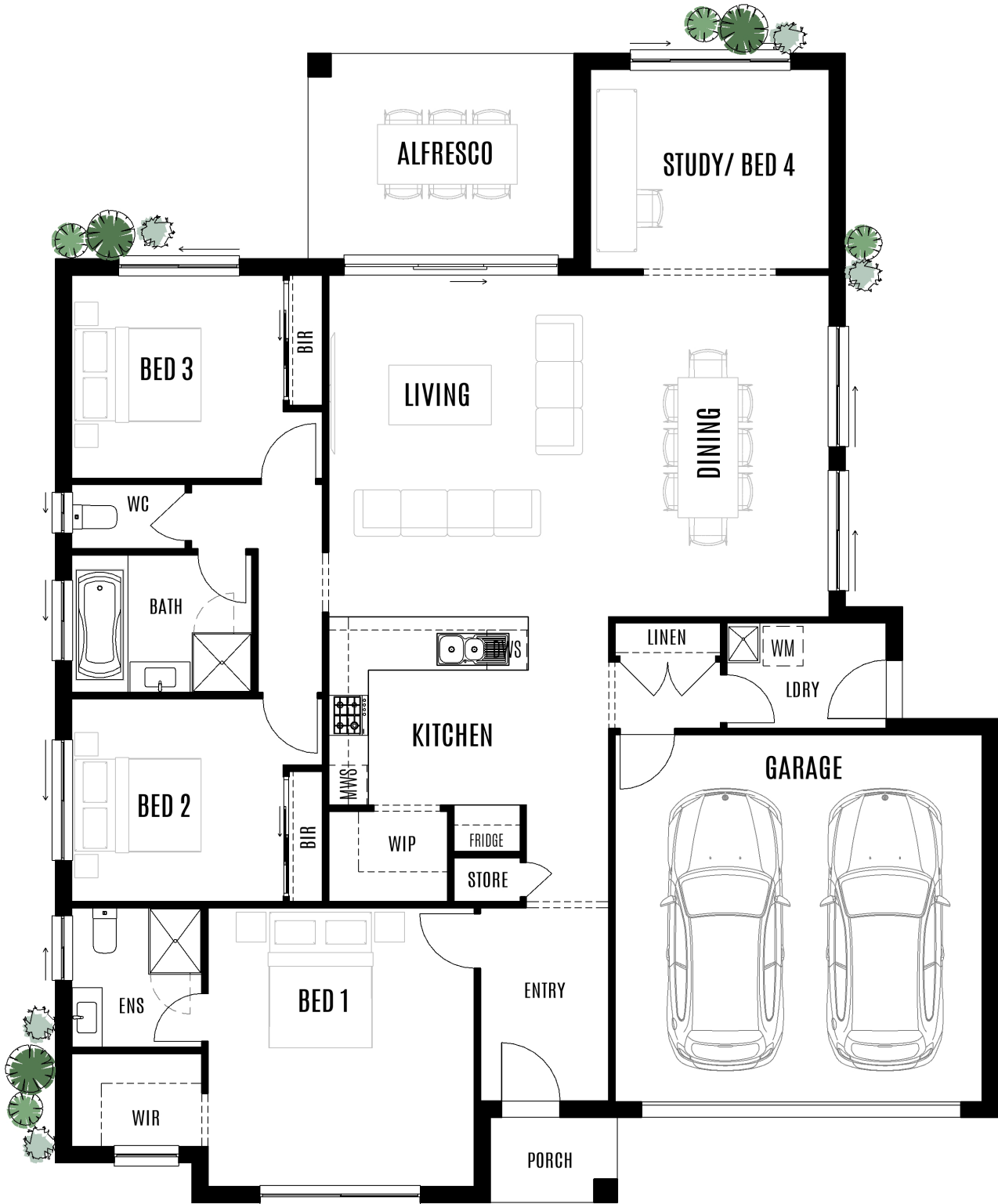


WORTHINGTON HOMES

 Call 1300 30 11 38

 worthingtonhomes.com.au

EDEN 22



HOUSE SIZE

Total area	202.3m ²
House length	17.26m
House width	14.16m
Block width	16.00m

ROOM SIZE

Living	4.21 x 5.13	Master bedroom	4.00 x 4.19
Dining	3.31 x 5.13	Bedroom 2	3.18 x 3.05
Kitchen	3.00 x 2.83	Bedroom 3	3.18 x 3.05
Alfresco	4.00 x 3.09	Bedroom 4	3.59 x 3.00
Garage	5.52 x 5.52		

Items highlighted in blue are optional upgrades

Why build with Worthington?

Here are 10 reasons why Worthington Homes is a better choice.

1 You're not just a number

You get your own dedicated Site Manager and will receive regular project updates.

3 No ghosting, guaranteed

Call the office and we will respond to your enquiry as promptly as possible.

5 Talk to real people

Only real people answer our phones, not automated robots or machines.

7 Standard site costs included

Your tender includes allowance for site works, council DA/CDC, service connectivity and BASIX.

9 No compromising on quality

Your home is built to a high standard of workmanship - exactly as it should be.

2 Enjoy a personalised service

We're all here to help and guide you throughout the journey to building your new home.

4 High-quality inclusion options

Choose from a wide selection of inclusions for a variety of budgets and tastes.

6 Minimal building disruption

We're proactive in solving any challenges along the way to minimise any delays.

8 What you see is what you get

We offer value-for-money and will always be upfront on costs so there are no surprises.

10 We'll build great memories too

Every home owner receives a personalised memory book as a keepsake of your journey.

“ We aim to make the journey of building your new home both **simple** and **stress-free**”



WORTHINGTON HOMES