



# Kosciuszko 48

Experience refined living at its finest with our new Kosciuszko 48 design, where luxury meets elegance.

Accommodate family and friends in a private guest suite with ensuite and walk-in robe while your family enjoys oversized bedrooms, each with its own walk-in robe and an adjoining ensuite. Entertain guests in a gourmet kitchen overlooking the living/dining and alfresco, all seamlessly connected to an outdoor kitchen and backyard oasis.

- Gourmet gas kitchen with butlers pantry
- Outdoor entertaining area with kitchen
- Media room for gaming and streaming
- Internal laundry with toilet and mud room
- Guest Suite can be a rumpus or home office



6



4.5



2



View our Value Plus, Lifestyle and Premium inclusions online

## DESIGN OPTIONS

- Outdoor kitchen that is additional to the alfresco
- Upgrade joinery to butler's pantry and laundry
- Customise the spaces to suit your family's needs, such as converting extra bedrooms into an office, a study or a rumpus.

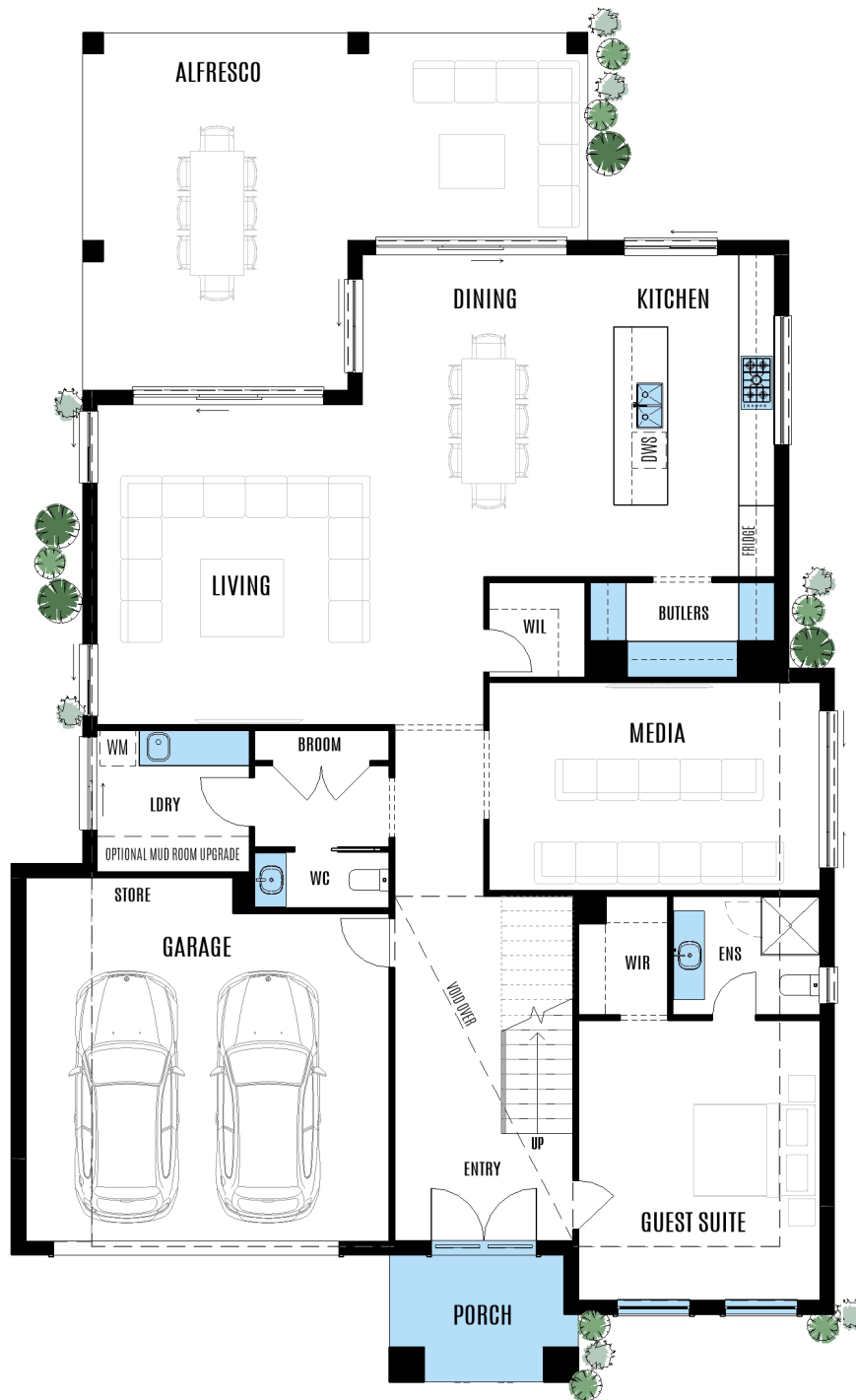


**WORTHINGTON HOMES**

Call 1300 30 11 38

[worthingtonhomes.com.au](http://worthingtonhomes.com.au)

# KOSCIUSZKO 48



Optional Upgrades

## GROUND FLOOR

### HOUSE SIZE

Total area	445.2m <sup>2</sup>
House length	22.71m
House width	13.85m
Block width	16.8m

### ROOM SIZE

Living	5.01 x 5.39	Master bedroom	4.15 x 5.01
Dining	4.24 x 5.42	Bedroom 2	3.78 x 3.86
Kitchen	2.70 x 5.42	Bedroom 3	3.41 x 3.35
Media room	5.57 x 3.50	Bedroom 4	3.40 x 4.10
Guest Suite	4.07 x 4.71	Bedroom 5	3.30 x 4.31
Alfresco	8.50 x 6.02/ 3.50	Sitting	4.52 x 3.82
Garage	6.12 x 5.52		

# KOSCIUSZKO 48



Optional Upgrades

## FIRST FLOOR

### HOUSE SIZE

Total area	445.2m <sup>2</sup>
House length	22.71m
House width	13.85m
Block width	16.8m

### ROOM SIZE

Living	5.01 x 5.39	Master bedroom	4.15 x 5.01
Dining	4.24 x 5.42	Bedroom 2	3.78 x 3.86
Kitchen	2.70 x 5.42	Bedroom 3	3.41 x 3.35
Media room	5.57 x 3.50	Bedroom 4	3.40 x 4.10
Guest Suite	4.07 x 4.71	Bedroom 5	3.30 x 4.31
Alfresco	8.50 x 6.02/ 3.50	Sitting	4.52 x 3.82
Garage	6.12 x 5.52		

# Why build with Worthington?

Here are 10 reasons why Worthington Homes is a better choice.

- 1 You're not just a number**  
You get your own dedicated Site Manager and will receive regular project updates.
- 2 Enjoy a personalised service**  
We're all here to help and guide you throughout the journey to building your new home.
- 3 No ghosting, guaranteed**  
Call the office and we will respond to your enquiry as promptly as possible.
- 4 High-quality inclusion options**  
Choose from a wide selection of inclusions for a variety of budgets and tastes.
- 5 Talk to real people**  
Only real people answer our phones, not automated robots or machines.
- 6 Minimal building disruption**  
We're proactive in solving any challenges along the way to minimise any delays.
- 7 Standard site costs included**  
Your tender includes allowance for site works, council DA/CDC, service connectivity and BASIX.
- 8 What you see is what you get**  
We offer value-for-money and will always be upfront on costs so there are no surprises.
- 9 No compromising on quality**  
Your home is built to a high standard of workmanship - exactly as it should be.
- 10 We'll build great memories too**  
Every home owner receives a personalised memory book as a keepsake of your journey.

“ We aim to make the journey of building your new home both **simple** and **stress-free** ”



**WORTHINGTON HOMES**